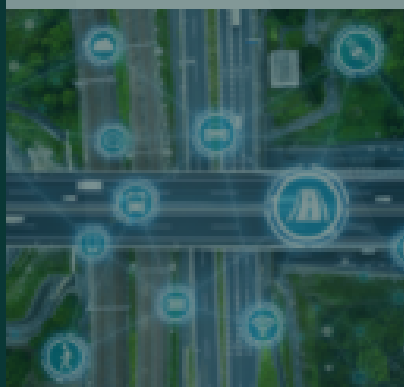




Gníomhaireacht Bainistíochta an Chisteáin Náisiúnta
National Treasury Management Agency

Ciste Infheistíochta Straitéisí d'Éirinn
Ireland Strategic Investment Fund

IMPACT STRATEGY



ISIF's Mandate, Strategic Ambition, Vision and Mission

The National Treasury Management Agency (NTMA) controls and manages the Ireland Strategic Investment Fund (ISIF), which has a statutory mandate to invest on a commercial basis in a manner designed to support economic activity and employment in the State.

Mandate

The mandate of the fund remains the same – to invest on a commercial basis to support economic activity and employment in the State.

Vision

ISIF's ambition is to have a transformative impact in Ireland by prioritising investments that address the main strategic challenges facing the country

Mission

ISIF seeks to fulfil its objectives by acting as a trusted, patient and flexible investor, attracting and developing exceptional people and delivering its investment strategies in line with its core values and responsible investment principles.

ISIF's Impact Strategy

ISIF will prioritise the use of its capital and resources to address strategic challenges and focus its efforts on making transformational investments across its impact themes of

- Climate,
- Housing and Enabling Investments,
- Indigenous Businesses, and
- Food and Agriculture.

ISIF will invest in driving the sustainable development of the Irish economy, focusing on transformative impact in executing its impact strategy.

The Fund will retain the flexibility to address any stabilisation investments that arise that are clear and national priorities.

Where possible, ISIF will target Regional Development across all Impact Themes. ISIF's strategy includes a fifth Compelling and National theme for situations that require the Fund to adapt to new national priorities, such as Brexit or another pandemic.

ISIF seeks to act as a catalyst for co-investment from specialist international capital providers and operators, securing commitments from them to Ireland.

CLIMATE

VISION

ISIF will target investments and partnerships that can materially advance the decarbonisation of the Irish economy and contribute to decarbonisation initiatives throughout the world in the short, medium, and long term.

CHALLENGES AND AMBITION

ISIF has to date invested over €450m in climate-related investments, ranging from renewable energy, to innovative technology companies, to forestry investments.

The ISIF Climate strategy encompasses all areas of the economy where carbon emissions are present such as energy, transport, built environment, waste and enterprise and incorporates other thematic investment areas that will be key to transitioning to a Net Zero economy, including hydrogen and carbon removal/climate repair.

ISIF will seek to focus its activity and capital on those areas where it can achieve the biggest contribution to achieving Net-Zero.

The ISIF Climate investment strategy has two components:

- Firstly, supporting the sustainable infrastructural requirements of the Irish economy out to 2030 in key areas where carbon emissions are prevalent, as outlined in the government's Climate Action Plan
- Secondly, in funding the development of new technologies and business models that will support the transition of the Irish economy to Net Zero before 2050.

ISIF will seek to partner with world-class investors, corporates, and entrepreneurs, both in Ireland and internationally, that share our commitment to achieving Net Zero and have the capabilities and ambition to deliver on this vision.



HOUSING AND ENABLING INVESTMENTS

VISION

ISIF's investment strategy focuses on delivering investments that will provide housing and enable Ireland's regions to enhance their ability to attract investment and generate employment opportunities. Investments in this area will be completed in 4 key areas.

- Residential Development
- Urban Regeneration
- Commercial Real Estate
- Infrastructure

CHALLENGES AND AMBITION

Residential

ISIF's Strategy will support the delivery of 25,000 new homes by 2030. The focus is currently on private/mass market-based developments. The ISIF has already committed more than €900 million and will continue to ensure a resilient and sustainable supply of investment capital. Sustainability in the built environment is also a key area of focus.



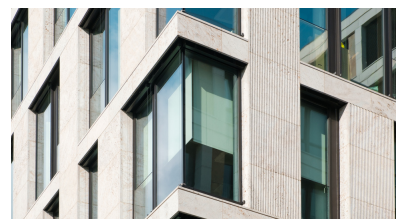
Urban Regeneration

ISIF provides long-term and patient capital for regionally transformational projects of scale – targeting a project in each of the five regional cities - Cork, Galway, Limerick, Waterford and Kilkenny. ISIF's approach plays a critical role in unlocking sites of strategic importance. Partnerships are formed with private and public sector counterparties, such as the Abbey Quarter in Kilkenny, a flagship project with others to follow.



Commercial Real Estate

ISIF is a through-the-cycle provider of investment capital to support the supply of high-quality places to work. These developments will enable the growth of indigenous businesses across the regions and attract and drive FDI into the regions. Highly strategic projects in Dublin e.g. industry clusters or regeneration projects, will also be considered.



Infrastructure

ISIF will support transport and connectivity-based infrastructure which enhances the physical, virtual and energy connectivity of the regions and Ireland as a whole. ISIF will invest in projects which enhance the overall infrastructure stock, focusing where investment capital can be most additional.





SCALING INDIGENOUS BUSINESSES

VISION

For Irish businesses to grow, they need access to a broad range of funding options at each stage of their lifecycle (from early-stage ventures to established businesses with growth plans).

CHALLENGES AND AMBITION

ISIF seeks to ensure that there is a dynamic and wide range of funding options available to Irish businesses to support their growth plans. It does this in two principal ways:

- ISIF is an active investor in venture capital, growth equity, private equity and private credit funds that themselves invest in Irish businesses at various stages of their growth journey (from early-stage start-ups to more established SMEs to high-growth companies with the potential to become Ireland's next unicorn). When investing in funds, ISIF looks to commit to managers (both Irish and international) that complement the funding landscape in Ireland and that have an investment focus aligned with ISIF's objective of growing Irish businesses.
- ISIF complements the funding options in the wider market by investing directly in businesses where ISIF's involvement helps unlock growth or economic impact opportunities that might not otherwise proceed. When investing directly, ISIF's focus is on investing primary capital to support growth opportunities. With the flexibility to invest across the capital structure, ISIF is always a minority shareholder and typically invests alongside other co-investors.



FOOD & AGRICULTURE

VISION

Ireland's national Agri-Food strategy, Food Vision 2030, has a goal for Ireland to become a world leader in sustainable food systems over the next decade by balancing climate, smart agriculture, environmental and economic sustainability, health, and innovation. ISIF's vision is to support the delivery of this goal.

CHALLENGES AND AMBITION

The ISIF strategy aims to support Irish food and Agriculture businesses to scale and grow. There will be an emphasis on innovation, climate change, sustainability, and emerging markets.

ISIF is supporting emissions reduction and will seek to develop new opportunities that arise through the low carbon transition by leveraging our natural advantages and industry capability.

ISIF will help develop new sectors where Ireland has a competitive advantage through Ireland's climate, natural resources, and industry capabilities such as aquaculture, plant-based foods, alternative crops, circular & Bio-economy, marine resources, Agtech and Foodtech.

ISIF will support de-carbonisation in Agriculture through areas such as farm-based biomethane, carbon sequestration in soils, peatland, forestry, and marine biomass.



Questions?
Contact us.



www.isif.ie

info@isif.ie

+353 1 238 4000



Gníomhaireacht Bainistíochta an Chisteáin Náisiúnta
National Treasury Management Agency

Ciste Infheistíochta Straitéisí d'Éirinn
Ireland Strategic Investment Fund